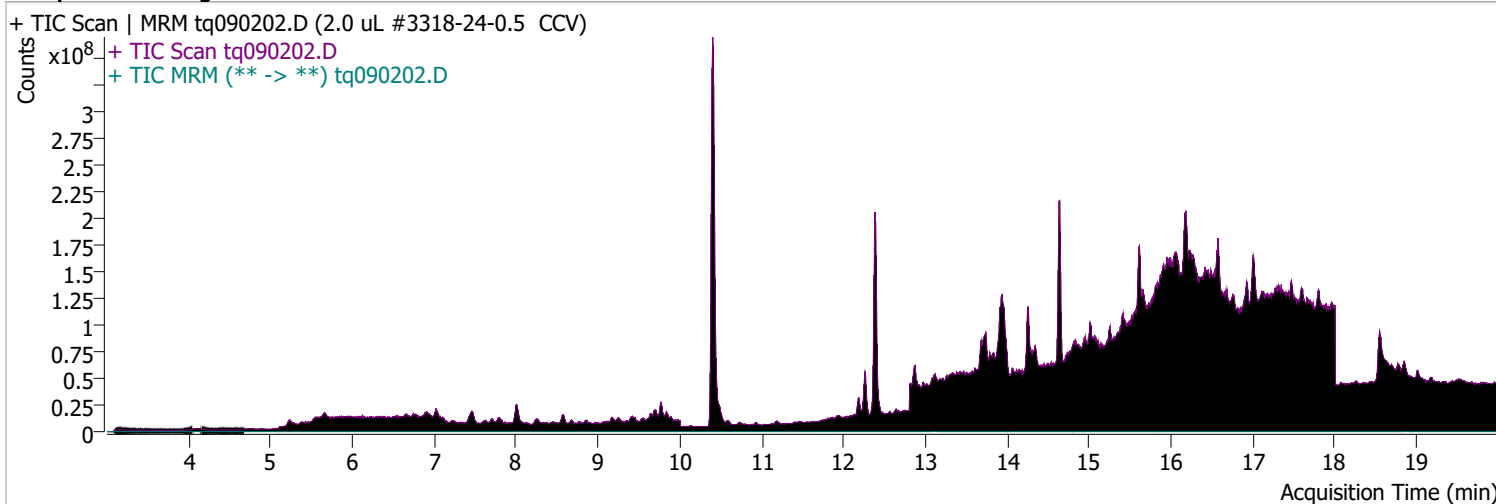


Quantitative Analysis Sample Report

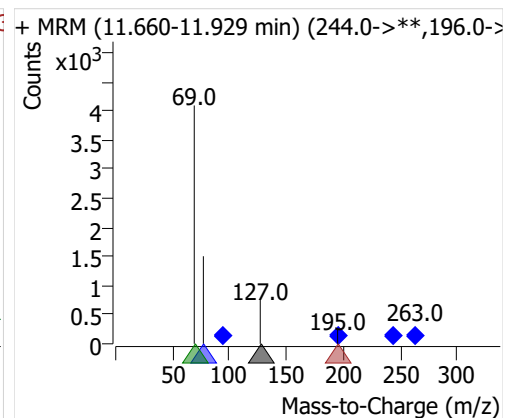
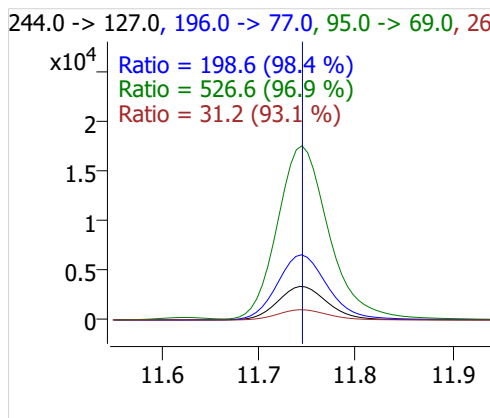
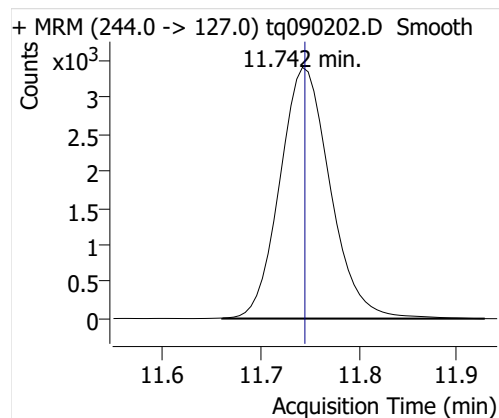
Batch Path D:\MassHunter\GCMS\1\data\02sep22\QuantResults\02sep22.batch.bin
Analysis Time 9/6/2022 9:40 AM **Analyst Name** DESKTOP-R0LAL7E\analyst
Report Time 9/22/2022 10:57:15 AM **Reporter Name** DESKTOP-R0LAL7E\analyst
Last Calib Update 9/6/2022 9:10 AM **Batch State** Processed
Quant Batch Version 10.1 **Quant Report Version** 10.1
Acq. Time 9/2/2022 9:53 AM **Data File** tq090202.D
Sample Type CC **Sample Name** 2.0 uL #3318-24-0.5 CCV
Dilution 1 **Acq. Method** tq22m0831

Sample Chromatogram

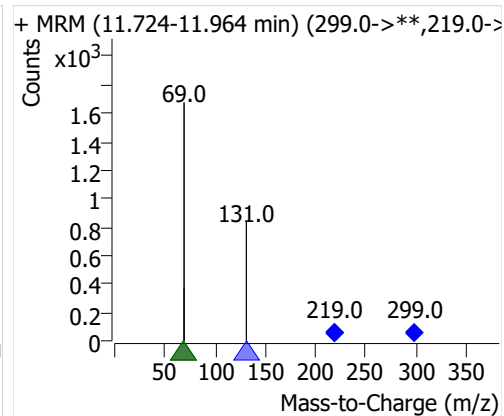
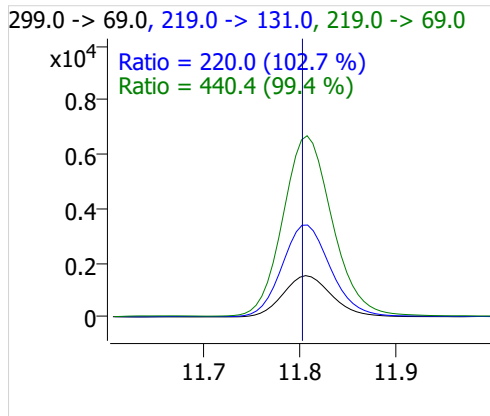
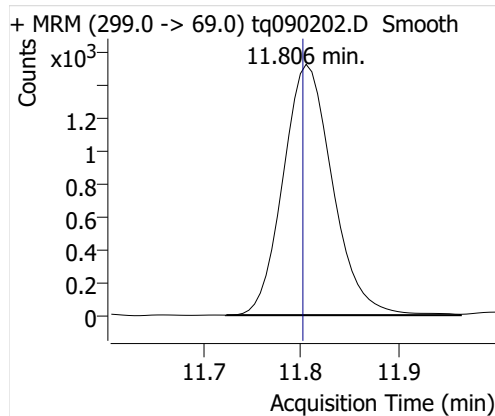


Compound	ISTD	RT	Resp.	ISTD Resp.	Resp. Ratio	Final Conc	Units
4:2 FTOH	6:2 FTOH-C13	11.742	12219	33021	0.3700	0.8894	ng
5:2sFTOH	6:2 FTOH-C13	11.806	5368	33021	0.1626	0.9216	ng
7:2sFTOH	6:2 FTOH-C13	13.111	10568	33021	0.3200	0.8473	ng
6:2 FTOH	6:2 FTOH-C13	13.145	21051	33021	0.6375	0.8269	ng
8:2 FTOH-C13	6:2 FTOH-C13	14.342	9471	33021	0.2868	0.9282	ng
8:2 FTOH	6:2 FTOH-C13	14.348	6304	33021	0.1909	0.8493	ng
10:2 FTOH	6:2 FTOH-C13	15.416	2238	33021	0.0678	0.9015	ng
12:2 FTOH	6:2 FTOH-C13	16.397	8383	33021	0.2539	0.8910	ng
NMeFOSA	6:2 FTOH-C13	18.601	6158	33021	0.1865	1.0392	ng
NEtFOSA	6:2 FTOH-C13	18.870	27839	33021	0.8431	1.0498	ng

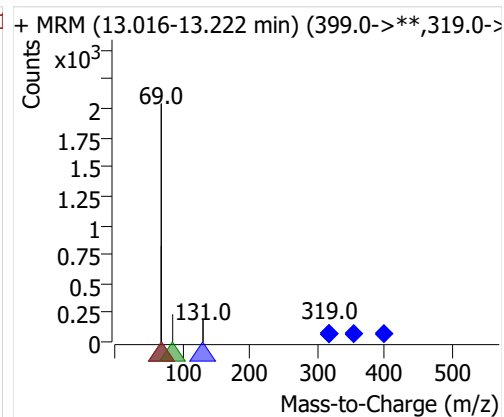
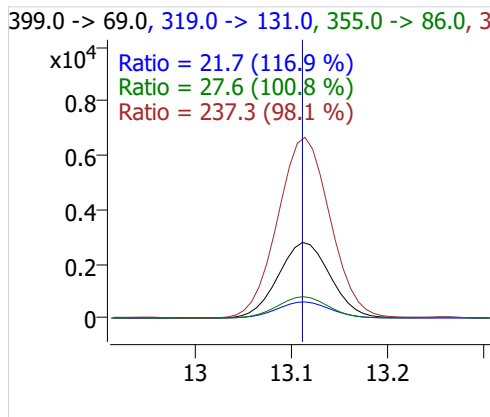
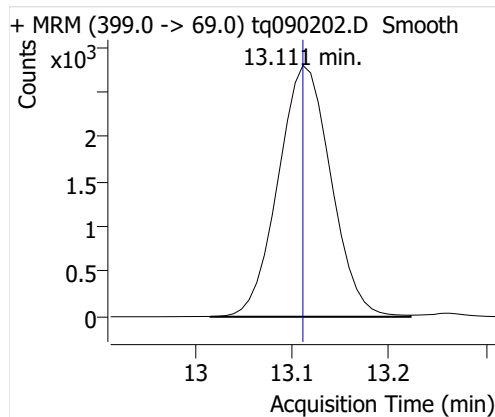
4:2 FTOH



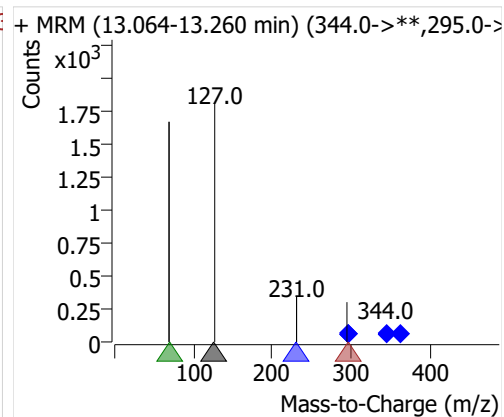
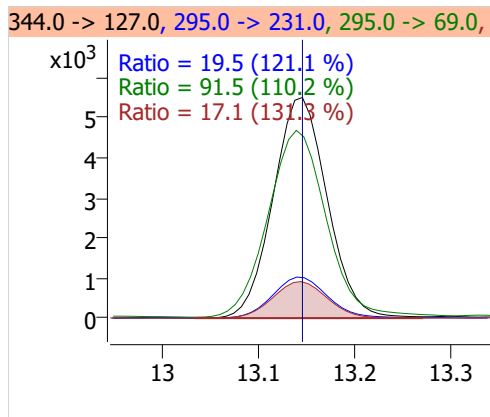
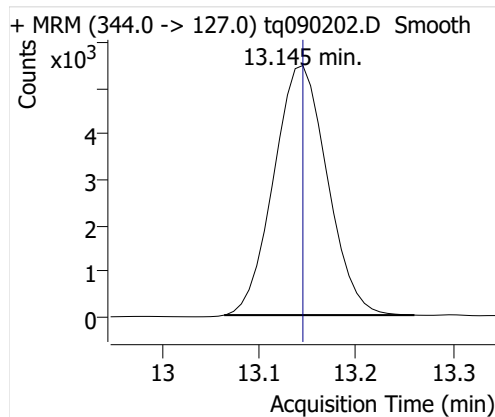
5:2sFTOH



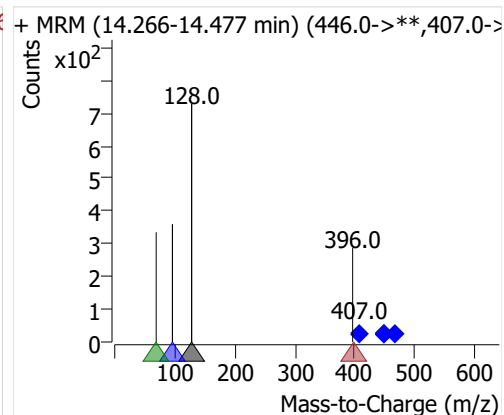
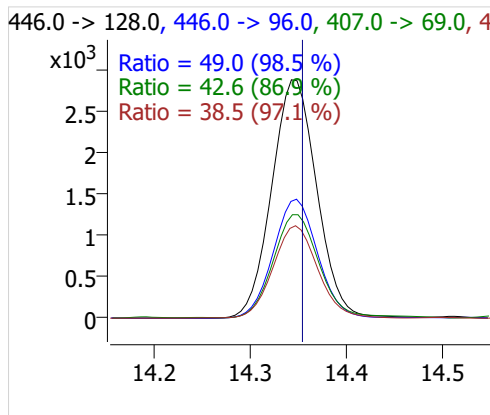
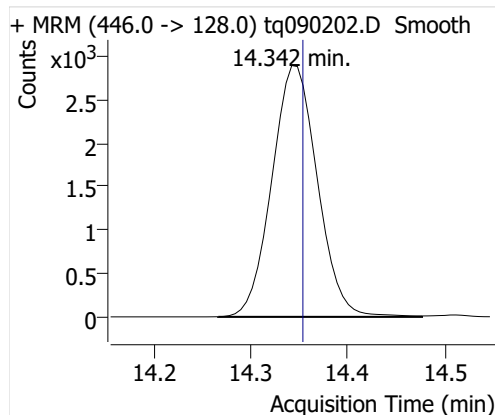
7:2sFTOH



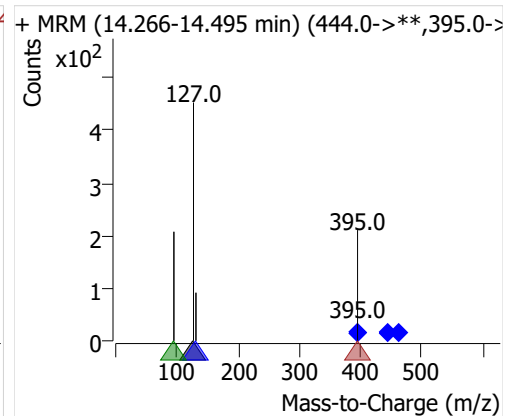
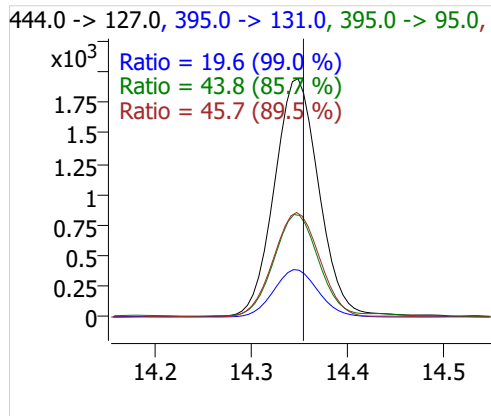
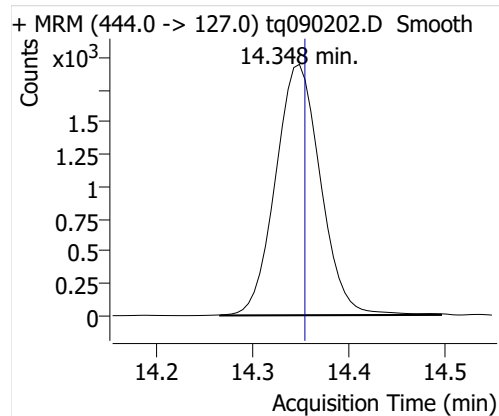
6:2 FTOH



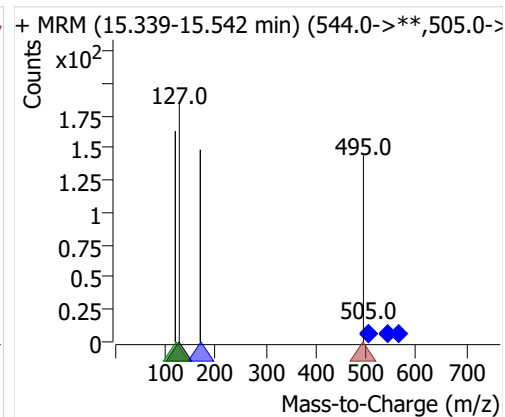
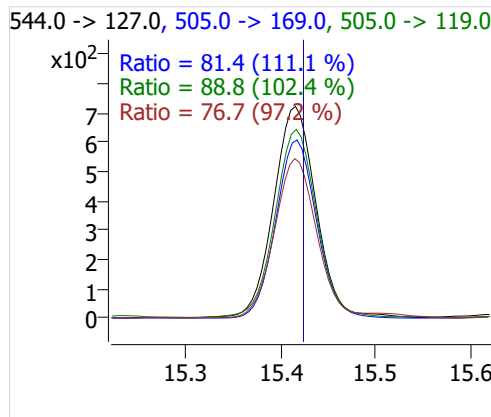
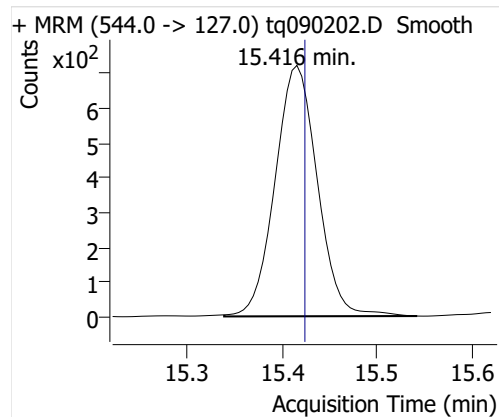
8:2 FTOH-C13



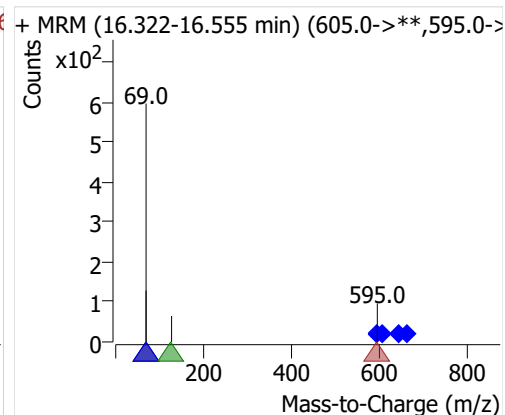
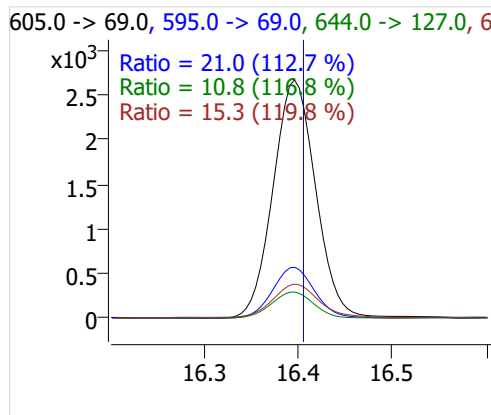
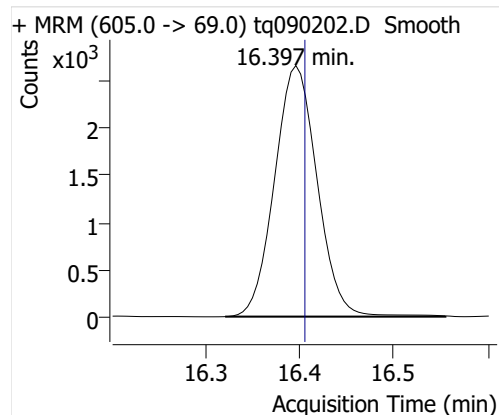
8:2 FTOH



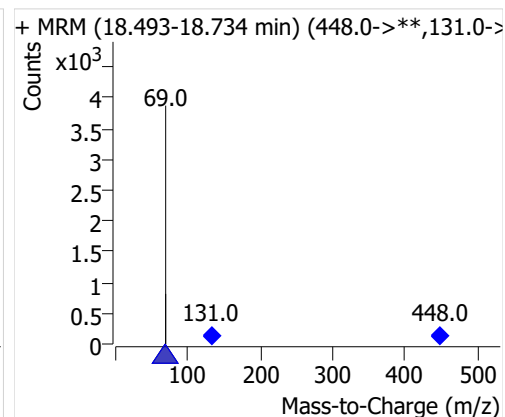
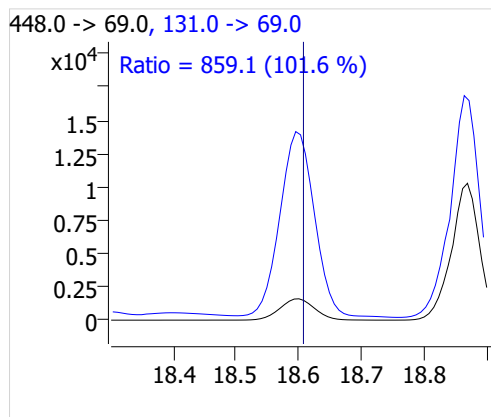
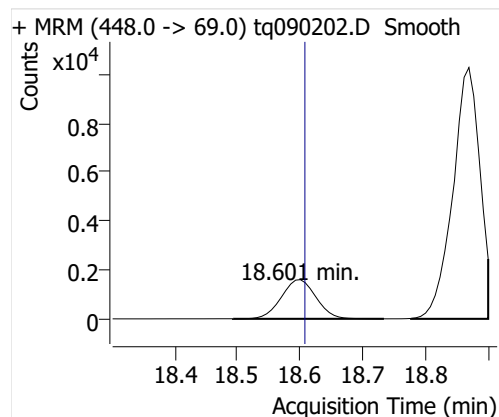
10:2 FTOH



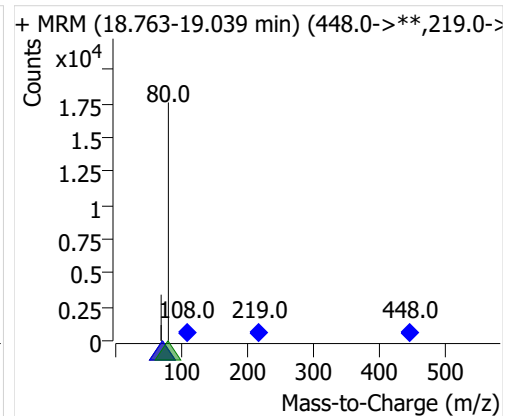
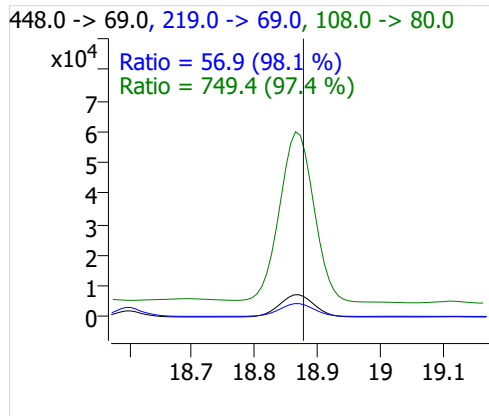
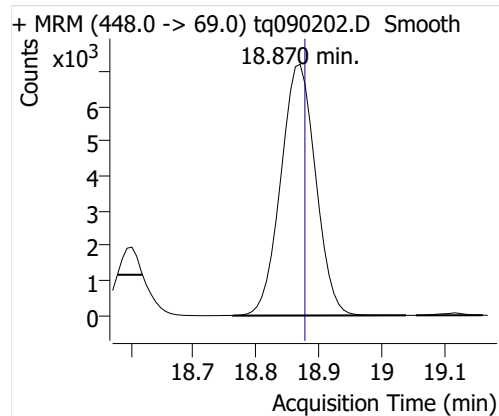
12:2 FTOH



NMeFOSA



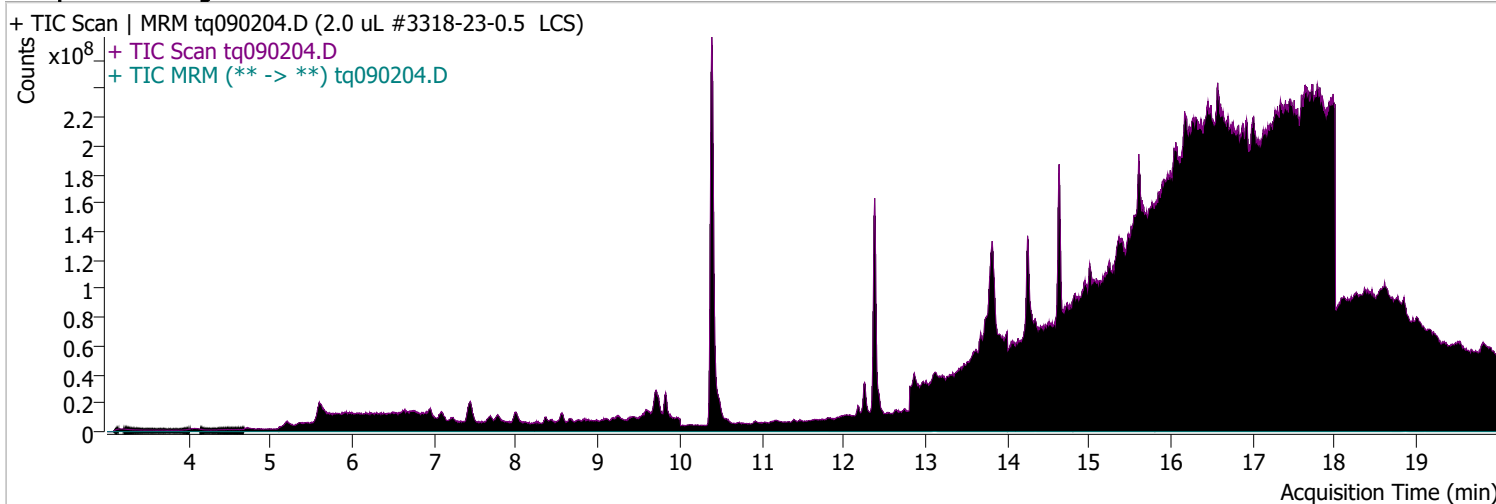
NETFOSA



Quantitative Analysis Sample Report

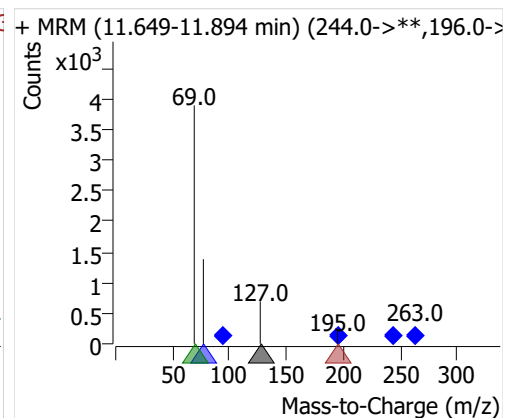
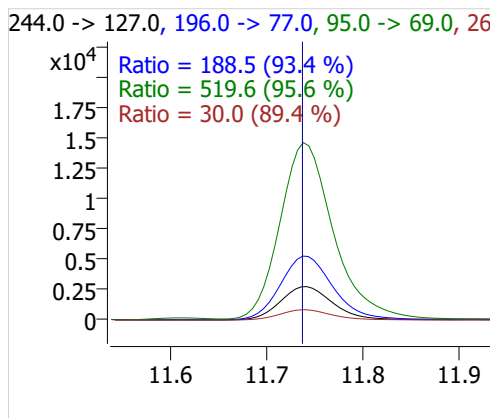
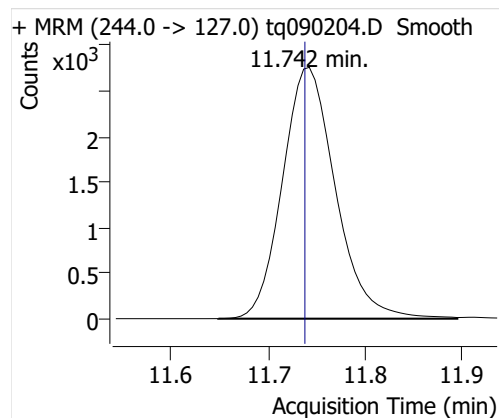
Batch Path D:\MassHunter\GCMS\1\data\02sep22\QuantResults\02sep22.batch.bin
 Analysis Time 9/6/2022 9:40 AM Analyst Name DESKTOP-R0LAL7E\analyst
 Report Time 9/22/2022 10:57:17 AM Reporter Name DESKTOP-R0LAL7E\analyst
 Last Calib Update 9/6/2022 9:10 AM Batch State Processed
 Quant Batch Version 10.1 Quant Report Version 10.1
 Acq. Time 9/2/2022 4:02 PM Data File tq090204.D
 Sample Type QC Sample Name 2.0 uL #3318-23-0.5 LCS
 Dilution 1 Acq. Method tq22m0831

Sample Chromatogram

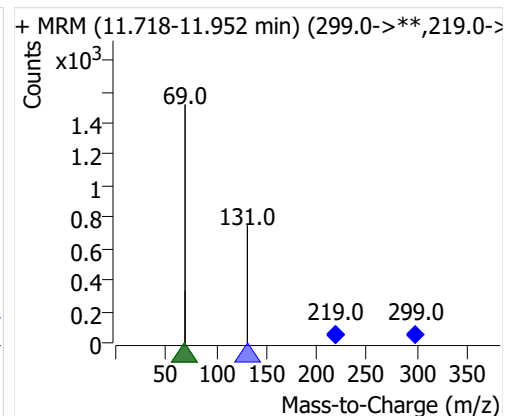
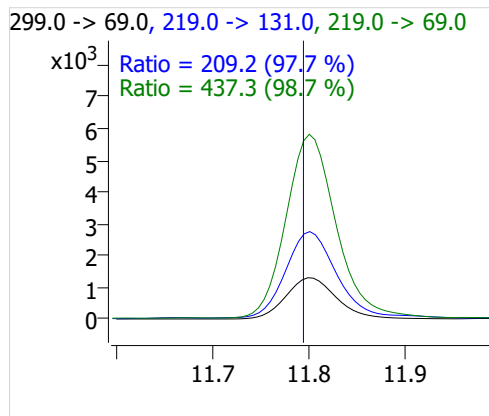
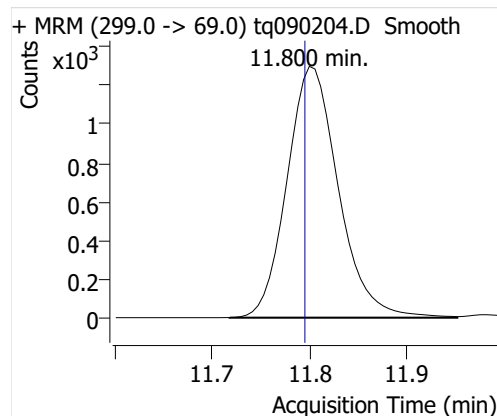


Compound	ISTD	RT	Resp.	ISTD Resp.	Resp. Ratio	Final Conc	Units
4:2 FTOH	6:2 FTOH-C13	11.742	10481	27837	0.3765	0.9050	ng
5:2sFTOH	6:2 FTOH-C13	11.800	4776	27837	0.1716	0.9726	ng
7:2sFTOH	6:2 FTOH-C13	13.111	9332	27837	0.3352	0.8875	ng
6:2 FTOH	6:2 FTOH-C13	13.137	19091	27837	0.6858	0.8895	ng
8:2 FTOH-C13	6:2 FTOH-C13	14.342	9085	27837	0.3264	1.0562	ng
8:2 FTOH	6:2 FTOH-C13	14.342	5907	27837	0.2122	0.9440	ng
10:2 FTOH	6:2 FTOH-C13	15.410	2158	27837	0.0775	1.0311	ng
12:2 FTOH	6:2 FTOH-C13	16.391	6614	27837	0.2376	0.8339	ng
NMeFOSA	6:2 FTOH-C13	18.593	4031	27837	0.1448	0.8070	ng
NEtFOSA	6:2 FTOH-C13	18.862	18190	27837	0.6535	0.8137	ng

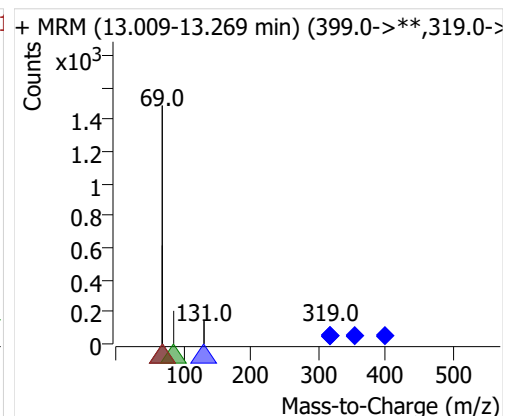
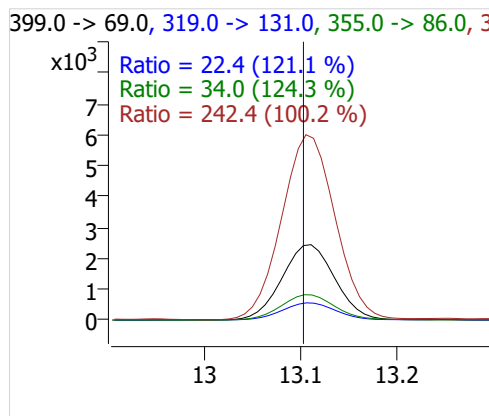
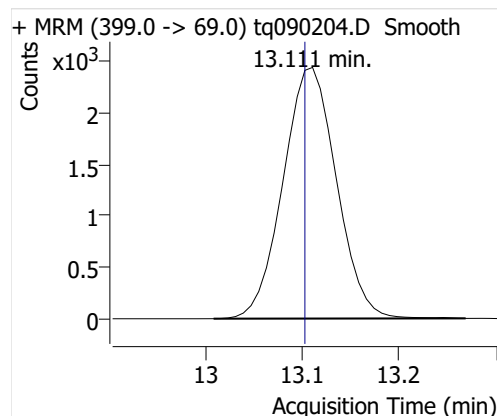
4:2 FTOH



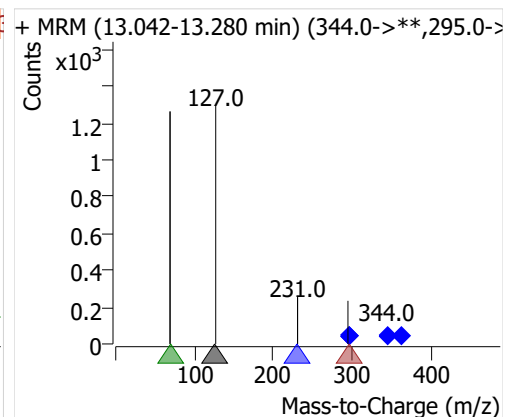
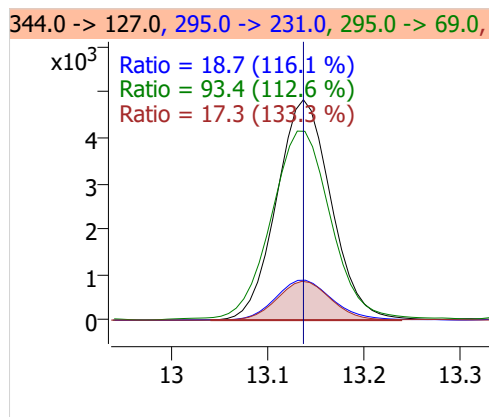
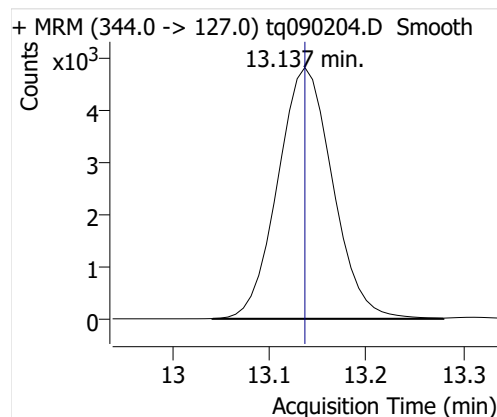
5:2sFTOH



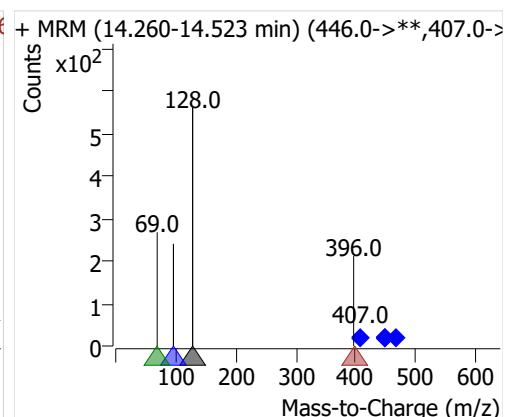
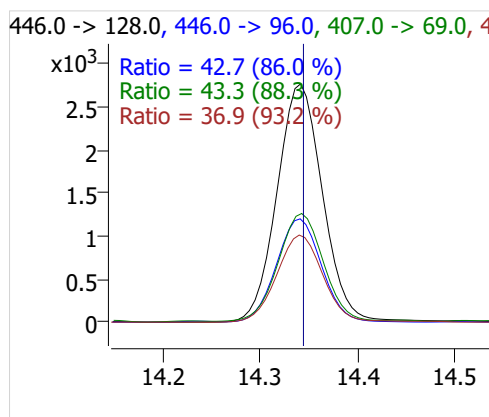
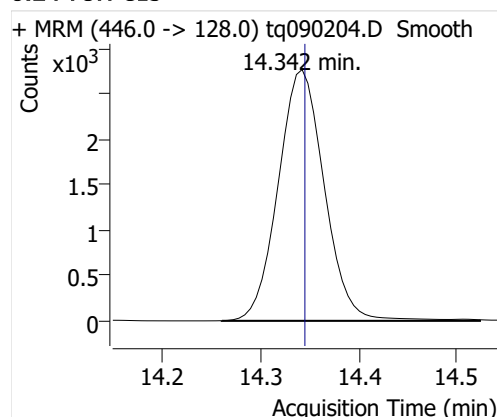
7:2sFTOH



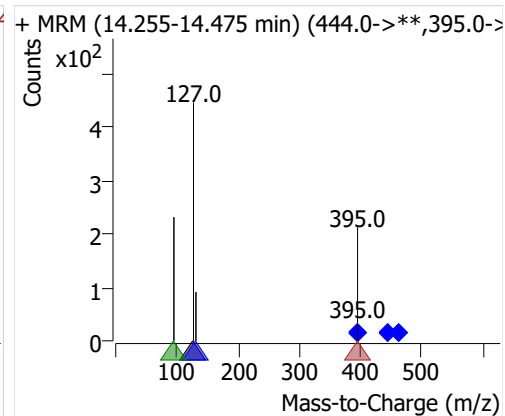
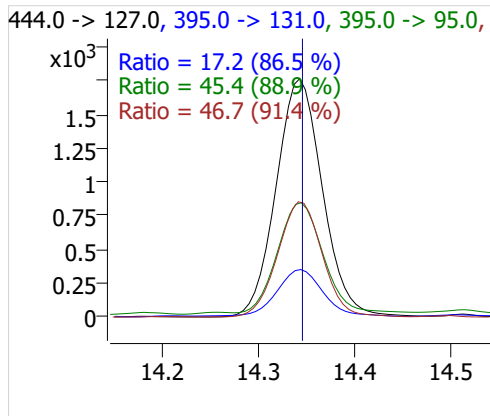
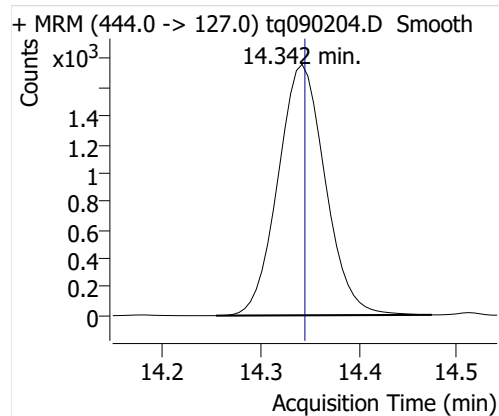
6:2 FTOH



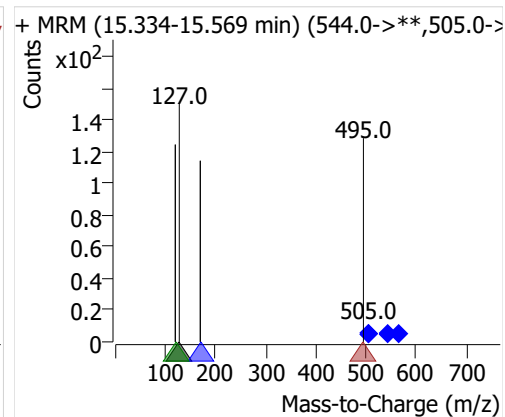
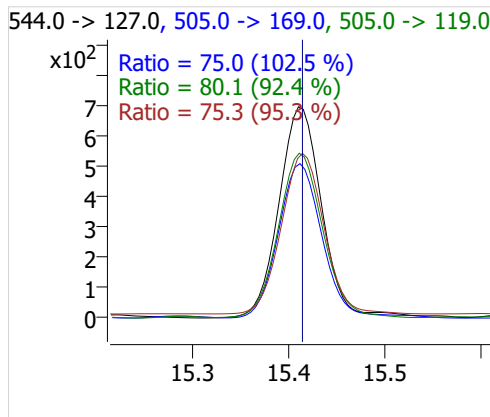
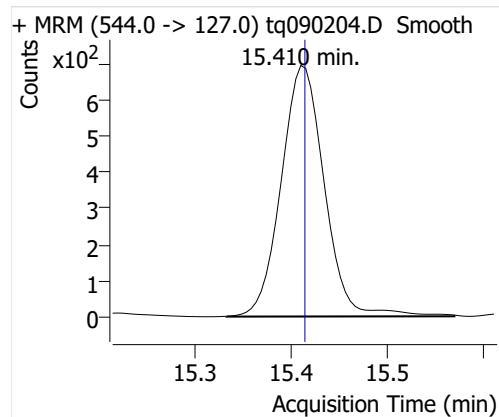
8:2 FTOH-C13



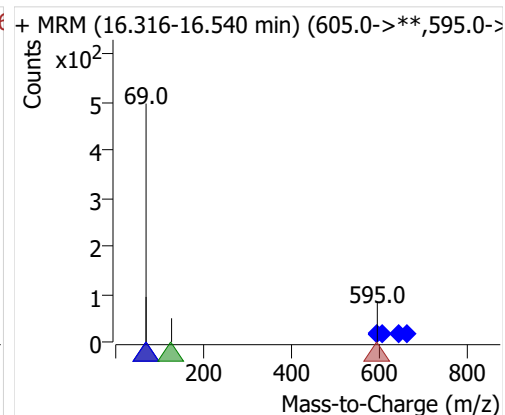
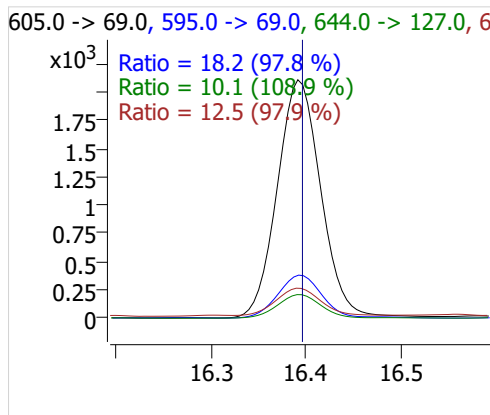
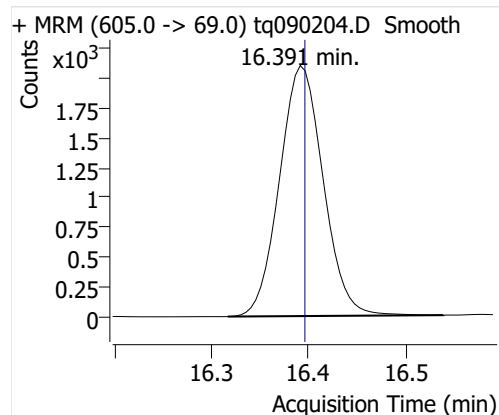
8:2 FTOH



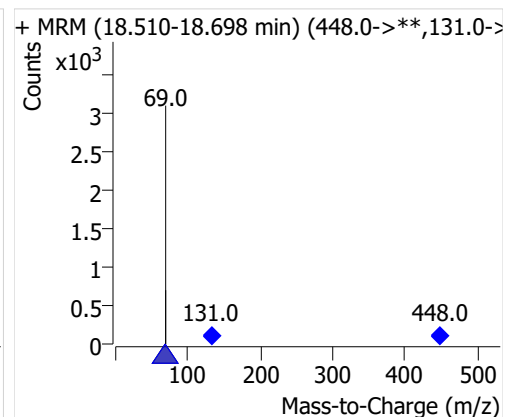
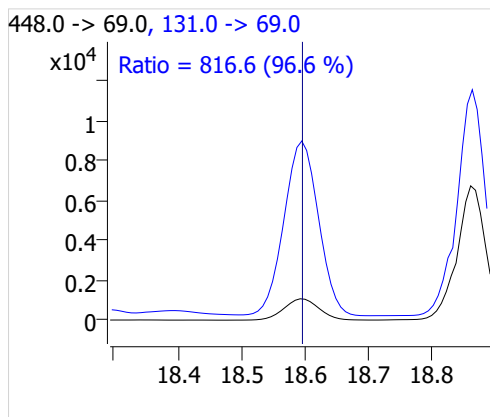
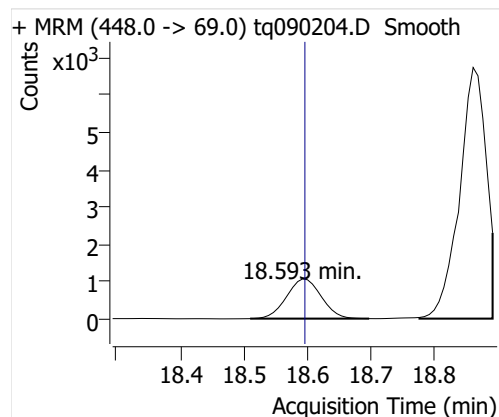
10:2 FTOH



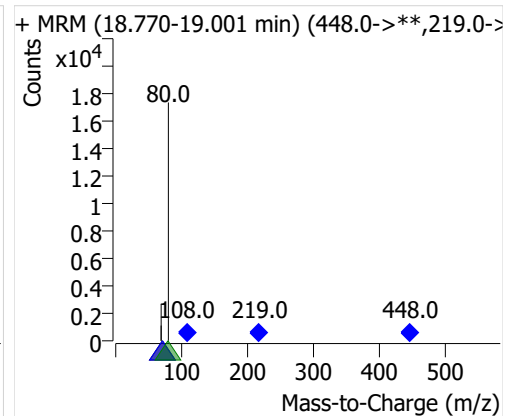
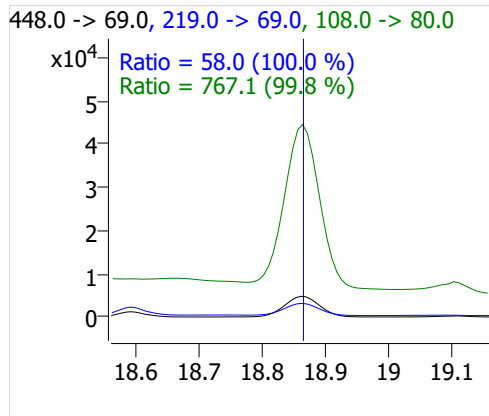
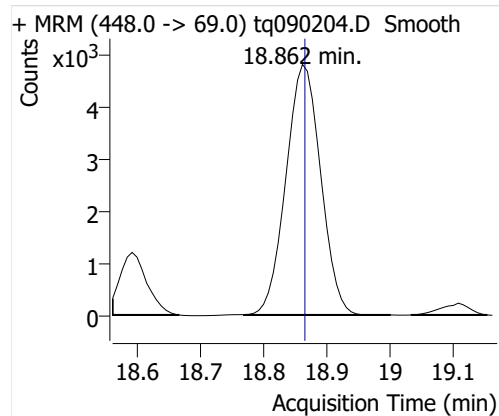
12:2 FTOH



NMeFOSA



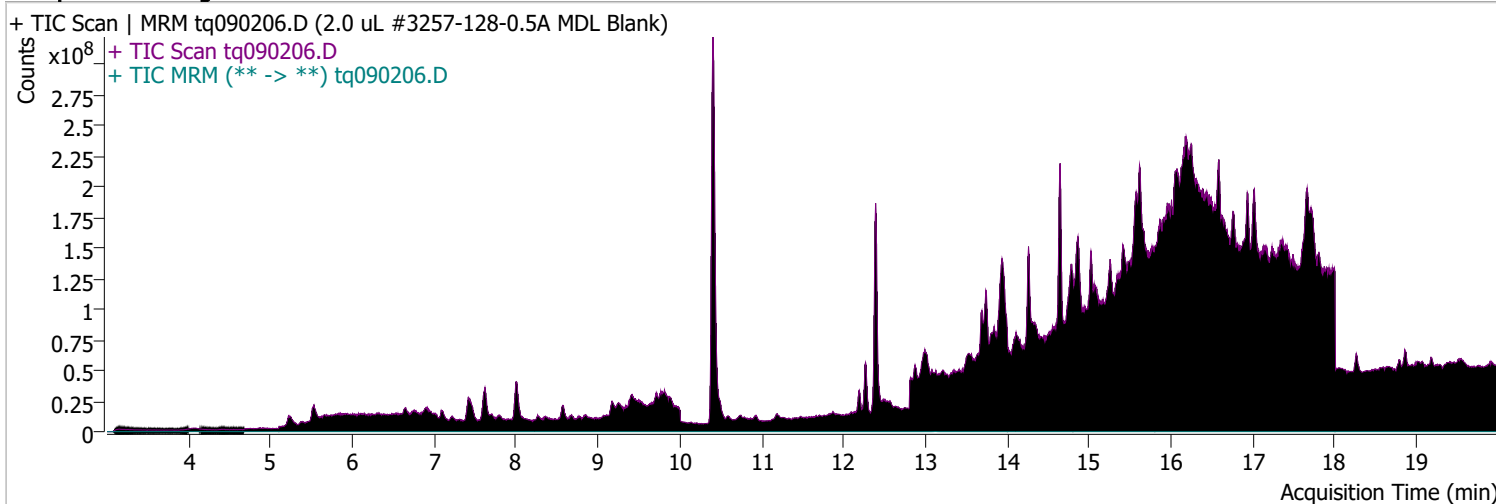
NETFOSA



Quantitative Analysis Sample Report

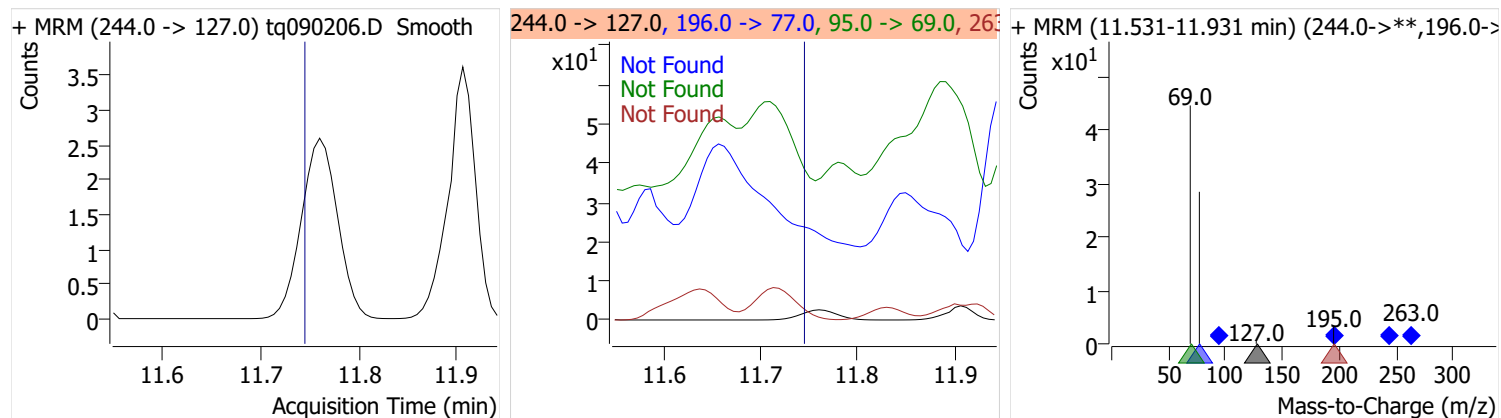
Batch Path D:\MassHunter\GCMS\1\data\02sep22\QuantResults\02sep22.batch.bin
Analysis Time 9/6/2022 9:40 AM **Analyst Name** DESKTOP-R0LAL7E\analyst
Report Time 9/22/2022 10:57:18 AM **Reporter Name** DESKTOP-R0LAL7E\analyst
Last Calib Update 9/6/2022 9:10 AM **Batch State** Processed
Quant Batch Version 10.1 **Quant Report Version** 10.1
Acq. Time 9/2/2022 5:24 PM **Data File** tq090206.D
Sample Type Sample **Sample Name** 2.0 uL #3257-128-0.5A MDL Blank
Dilution 1 **Acq. Method** tq22m0831

Sample Chromatogram

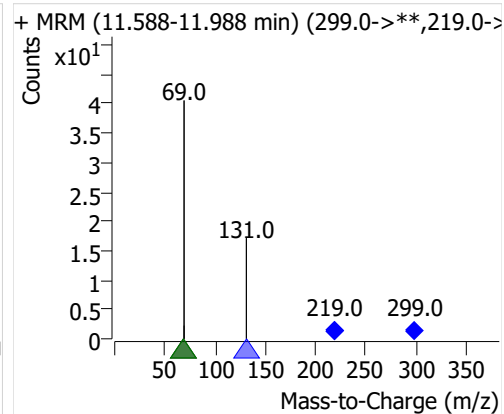
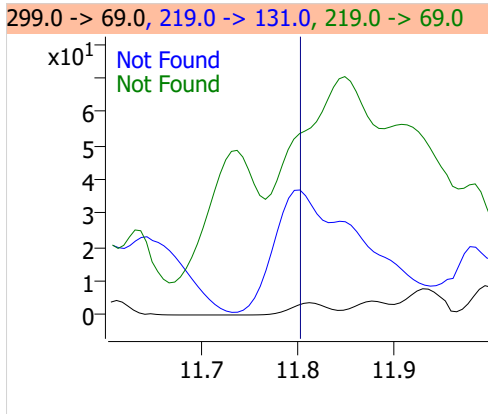
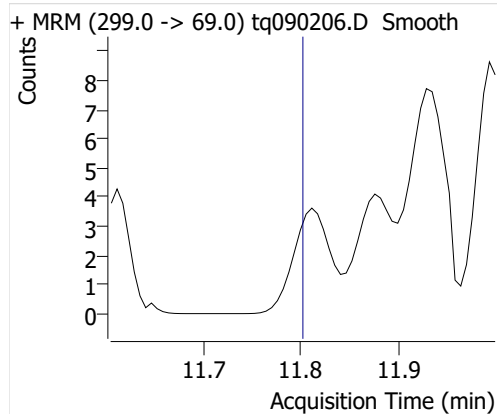


Compound	ISTD	RT	Resp.	ISTD Resp.	Resp. Ratio	Final Conc	Units
4:2 FTOH	6:2 FTOH-C13			26464		ND	ng
5:2sFTOH	6:2 FTOH-C13			26464		ND	ng
7:2sFTOH	6:2 FTOH-C13			26464		ND	ng
6:2 FTOH	6:2 FTOH-C13			26464		ND	ng
8:2 FTOH-C13	6:2 FTOH-C13	14.348	8369	26464	0.3162	1.0234	ng
8:2 FTOH	6:2 FTOH-C13			26464		ND	ng
10:2 FTOH	6:2 FTOH-C13			26464		ND	ng
12:2 FTOH	6:2 FTOH-C13			26464		ND	ng
NMeFOSA	6:2 FTOH-C13			26464		ND	ng
NEtFOSA	6:2 FTOH-C13			26464		ND	ng

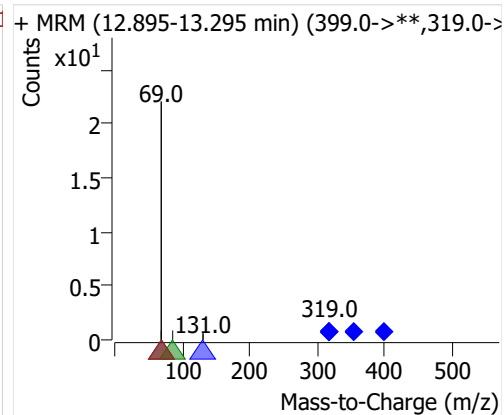
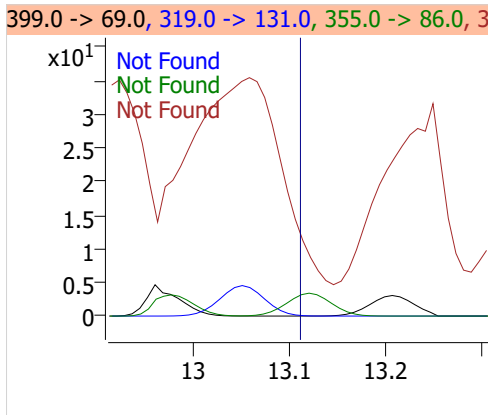
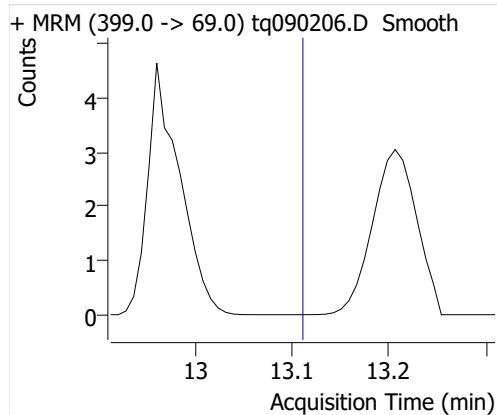
4:2 FTOH



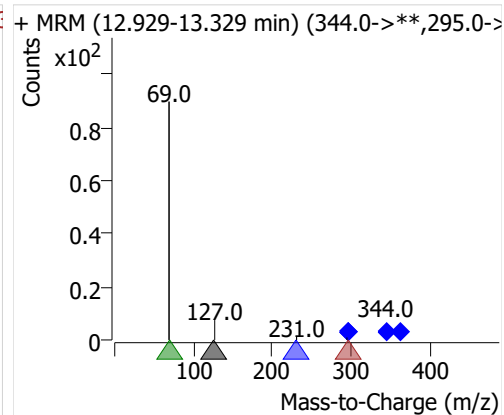
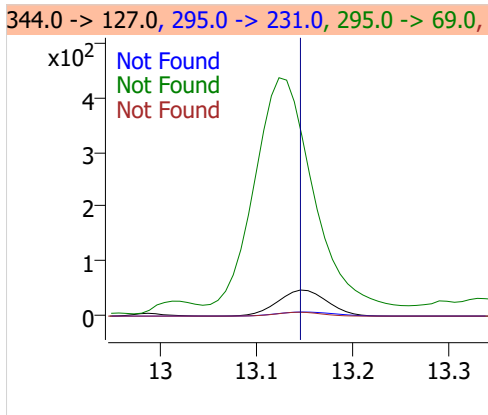
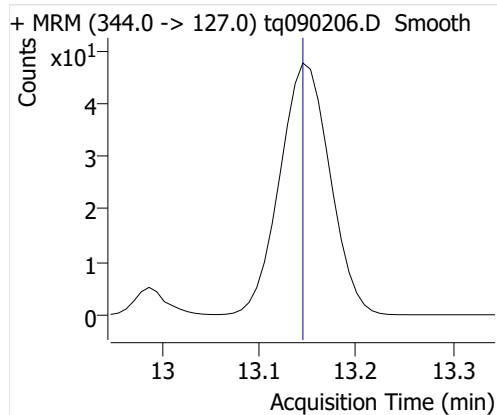
5:2sFTOH



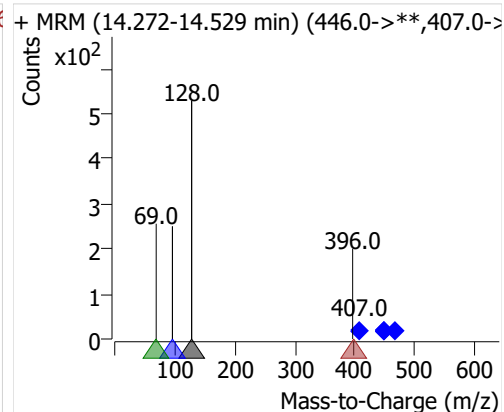
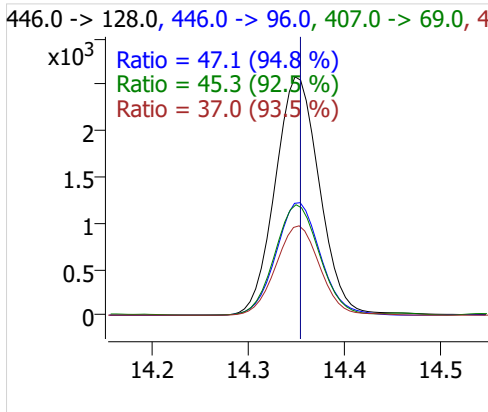
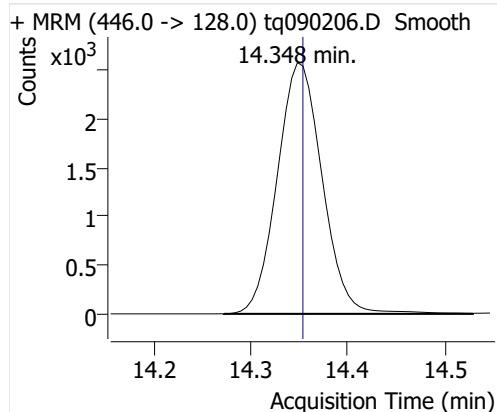
7:2sFTOH



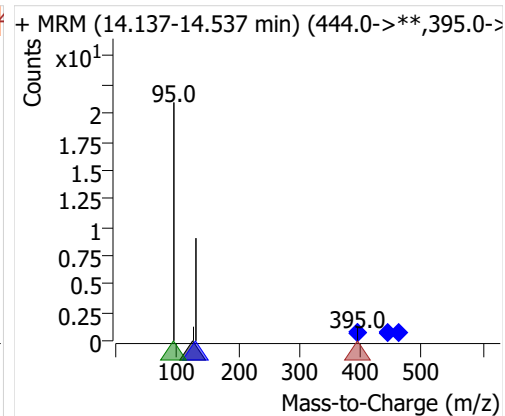
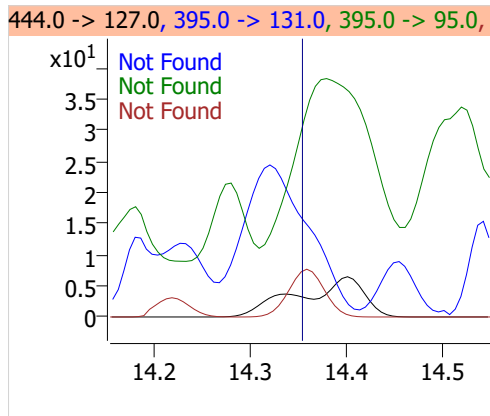
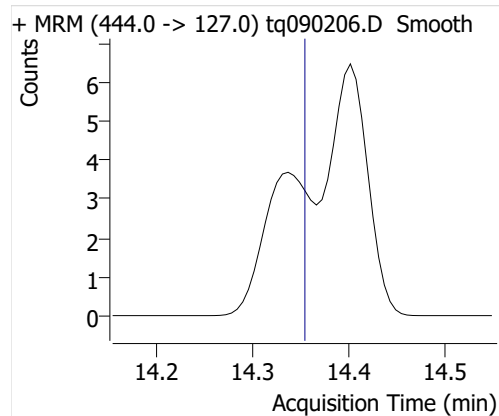
6:2 FTOH



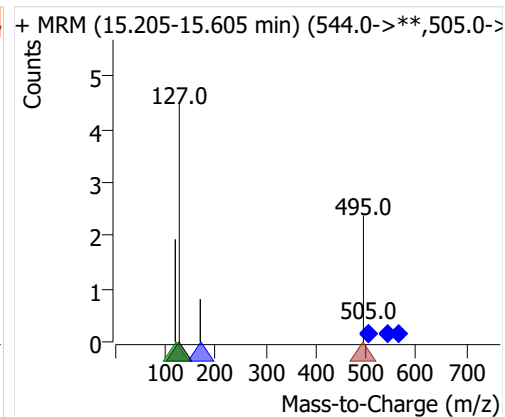
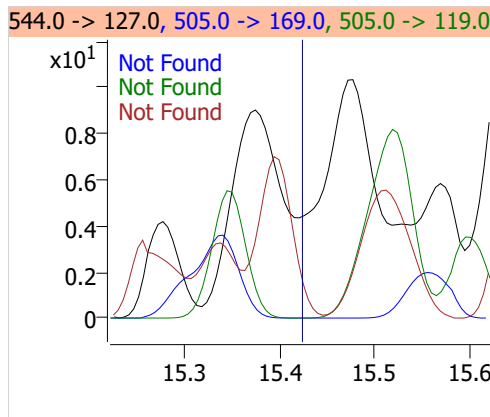
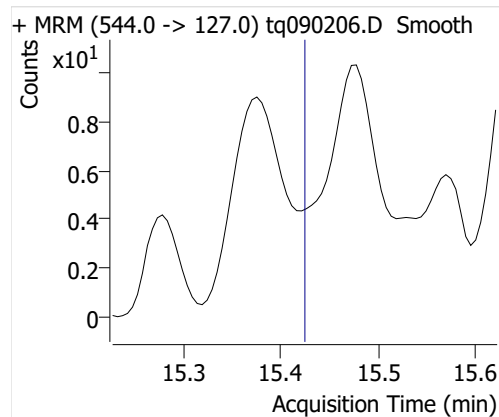
8:2 FTOH-C13



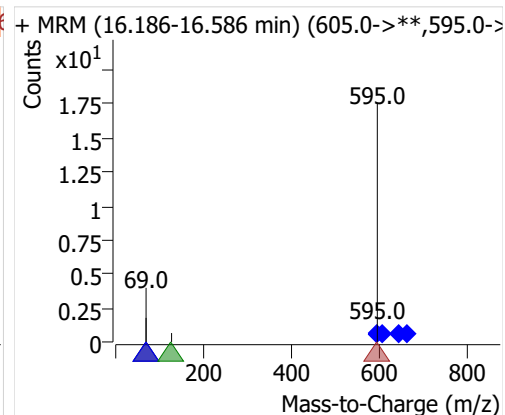
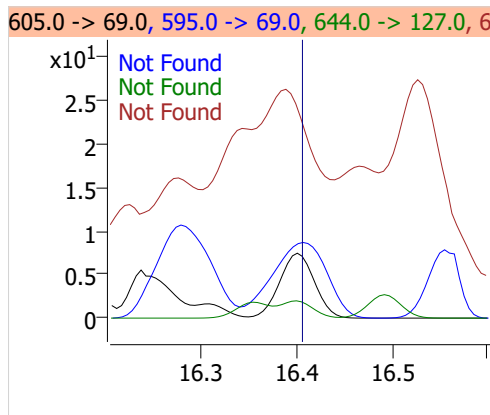
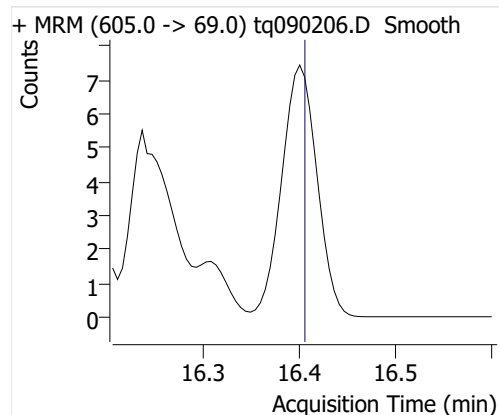
8:2 FTOH



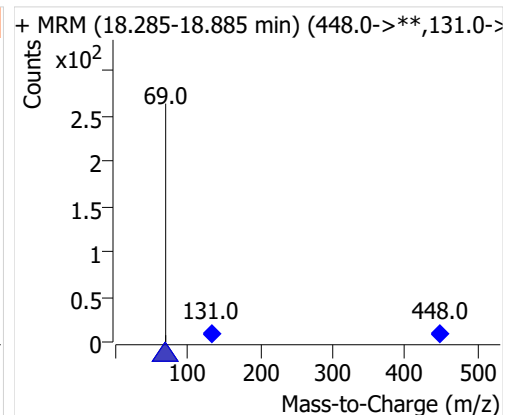
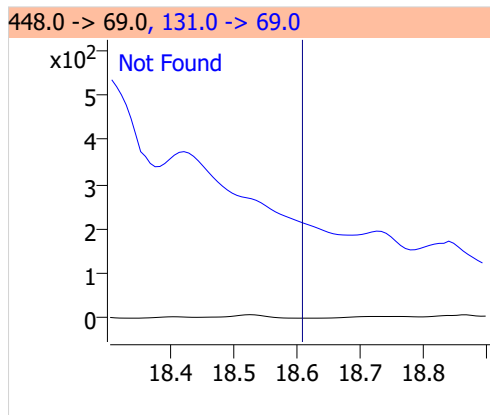
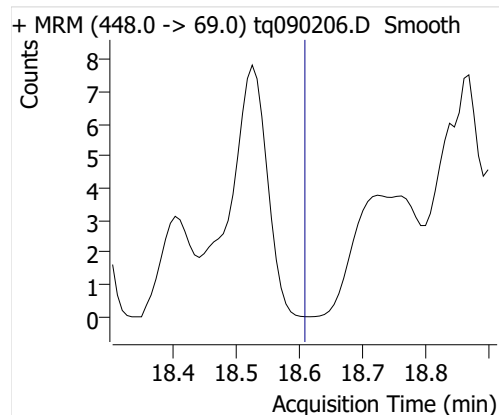
10:2 FTOH



12:2 FTOH



NMeFOSA



NETFOSA

